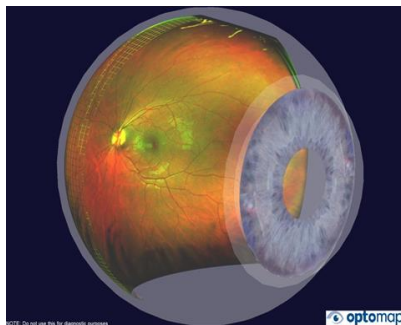




## Better Detection = Better Outcomes

*At ViewPointe Vision we are committed to providing the highest level of care by using the most advanced diagnostic tools to ensure a comfortable, efficient, and comprehensive examination.*

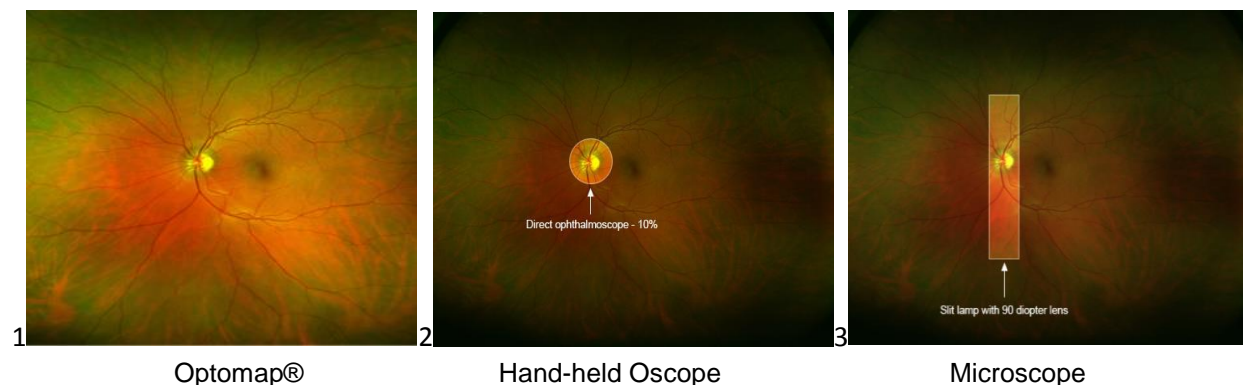


### Advantages of an Optomap® Scan:

- Doctors can view up to 80% of the retina at one time.
- Image size/detail can be magnified up to 200 times.
- Does not require dilation to examine the retina.
- Screens for retinal eye disease.
- Image is part of your permanent medical record.
- Much faster than a dilated retina exam.

Your retina is responsible for transmitting light and images you see to the optic nerve. If your retina develops any irregularities early detection is the key to proper treatment. Often signs and symptoms are minimal during early stages.

The images below depict the viewing area of the 3 most common methods of retinal evaluation. The 1st image is the Optomap® retinal scan, the 2nd image is showing the amount of the retina visible at one time using the hand-held light scope (Ophthalmoscope), and the 3rd is showing the amount visible at one time using the microscope (slit lamp) alone.



The fee for the Optomap® retinal scan is only \$39.00 and not normally covered by insurance plans. If an Optomap® is not done then the comprehensive retinal exam will be done using eye drops to dilate the pupils. Please allow 20-30 minutes for the eyedrops to dilate the pupils so the doctor can examine your retina. Residual effects (including blurry near-vision and sensitivity to light) may be felt for up to 8 hours after the drops are applied. The waiver to opt out of the Optomap® retinal scan will be presented at the time of your exam.